
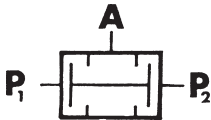

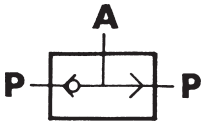


Signal processing valves

These valves suitable for power or control circuits allow to obtain an output signal provided there are both input signals (AND valve) or one of the two (OR valve). The two versions, threaded connections G 1/8 or quick couplings Ø 4x2, solve all application needs.

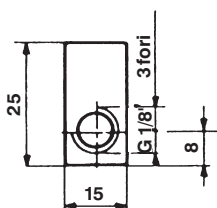
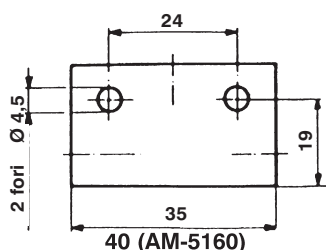
TECHNICAL CHARACTERISTICS

Max. working pressure: 1,5 ÷ 8 bar
 Ambient temperature: -10 ÷ 75°C
 Fluid temperature: 50°C
 Fluid: compressed air or neutral gases.
 Flow capacity at 6 bar: 300 NI/min (version G 1/8 threaded connections) with nominal diameter 3,5 mm.
 110 NI/min (version with quick coupling 4x2) with normal diameter 2 mm.
 Seals in oil-proof rubber.

Type	Functioning principle	Connections	Part n°
Two pressure valve "AND"			
	 $A = P_1 \cdot P_2$ <p>$P_1 - P_2 = \text{Pressure}$ $A = \text{Consumption}$</p>	Threaded body G 1/8	AM-5160
		Quick couplings Ø 4x2	AM-5161
Selector valve "OR"			
	 $A = P + P$ <p>$P = \text{Pressure}$ $A = \text{Consumption}$</p>	Threaded body G 1/8	AM-5162
		Quick couplings Ø 4x2	AM-5163

Overall dimensions

Threaded connections G 1/8



Quick couplings pipe Ø 4x2

